

**!** Please read and comply with this user manual and the safety warnings prior to the use of these furniture mover to protect you and others.

**●** This equipment must not be used to carry or lift personnel.

**⚠ WARNING**

**IMPROPER USE OF ECO-JACK® FURNITURE MOVERS CAN RESULT IN SERIOUS INJURY**

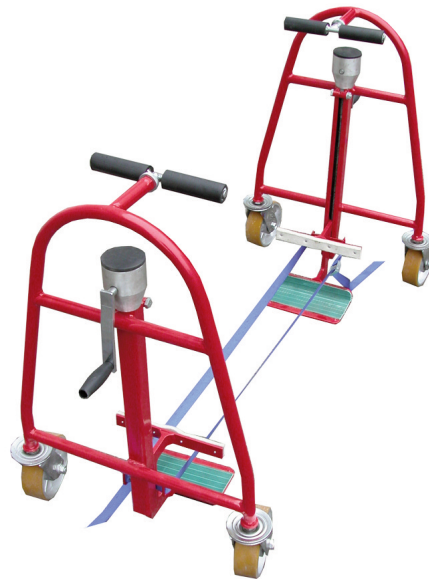
**TO AVOID INJURY:** ■ Always make sure that the load is fully supported by the claw or top plate  
 ■ Jack to rest on solid ground in VERTICAL position ■ Jack only with the pivoting feet facing towards the load ■ Never exceed maximum lifting capacity ■ No side load permissible ■ Keep body parts from beneath the load and all moving parts at all times ■ Bystanders should keep clear of the load (to a min. of 1,5 times the highest point of the load) ■ Support the load with suitable supports ■ Lift on fixed parts of the load ■ Do not use the jack if it is damaged or without a valid inspection certificate ■ Always use recommended lubricants ■ Always use genuine HTS replacement parts ■ Periodically check lubricant level ■ Read the user manual provided with the jack and follow all instructions before operation ■ The user is responsible for condition of all warning labels ■ These instructions are guidelines and you should always refer to the operating manual if in doubt.  
 In all circumstances consider "SAFETY FIRST"

© 2012 HTS GmbH

## Thank you

for choosing an ECO-Jack DUAL HT Furniture Mover. A quality product from HTS.

The ECO-Jack DUAL HT enables you to lift and move heavy loads, machines, and other items safely.



- ECO-Jack DUAL HT600 - a mechanical furniture mover with a load moving capacity of up to 600kg
- ECO-Jack DUAL HT1800 - a hydraulic furniture mover with a load moving capacity of up to 1.800kg above are supplied with ratched straps

### Table of contents:

Introduction / Product details	page 1
Operating instructions	page 2
Safety warnings	page 3
Declaration of conformity	page 3
Spare part list	page 4



## Specifications - Overview

Type:	Part-No.:	Capacity:	Stroke:	Width:	Wheel:	Length:	Weight:
HT600	13 00 60 300	2x300kg	300mm	535mm	125mm	5000mm	2x25kg
HT1800	13 01 80 250	2x900kg	250mm	535mm	150mm	5000mm	2x43kg

## How to use:

Release the supplied ratched strap to separate the two units. The total capacity splits on both units each carrying half.

Place the units on either side of the load to be lifted. Make sure that the end of the load platform is touching the load. The load should be self-supporting and not longer than the supplied ratched straps. Secure the furniture mover with the load using the ratched straps. Now you have one tight unit.

To Lift:

HT1800: Close the valves at the cylinders and pump on both sides of the load on each unit. Make sure the load is level.

HT600: Rotate the handle and lift both sides up until the load is level.

Now you can move the load and place it at the new location (depends on space). Move the load only on a level floor. The Furniture mover is not intended to be pushed or pulled with a powered unit.

To lower the load:

HT1800: open the valve on the cylinder carefully until then load has reached the floor.

HT600: Rotate the handle downwards until then load has reached the floor.

Release the ratched straps on both sides and put the two units back together, securing them with the ratched straps. Make sure you are always two persons using the ECO-Jack HT DUAL - its safer and easier.

## Warranty:

The standard warranty is 6 month. Any changes on the product will result in losing the warranty, except for changes with prior permission of HTS.

## Repair and Service

For any service or repair please contact us for an offer.

## Safety

Never put arms, legs, head etc. under lifted loads. Always pay close attention to the lifted load and never leave the equipment unattended. The system must be used by instructed personell.

## Safety technology

Always read this user manual prior to the use completely and carefully. Always make sure that bystanders and children are away from the work area. Cordon off a No-Go area with cones or tape etc. The NO-GO area must be the area of the load plus a radius around the load of at least 1,5 times the highest dimension of the load.

### Safety valves


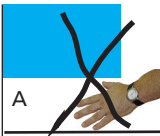




In all ECO-Jack DUAL HT lifting equipments are safety valves installed which limit the max. lifting load.

### Warnings

The above described safety valves are only working in the lifting process. Do not place additional load on the system if lifted. If you need a higher capacity HTS can supply ECO-Jack DUAL HT with higher capacities.

During the lowering process make sure that the personell which is lowering the load only touches the lever to do so not anything else. Never put arms, legs, head etc. under lifted loads or touch anything diuring the lifting and lowering process. Be aware of the dangers of moving parts and the risk of injury to the hands or other body parts.

### Additional Safety:

		<p>If the load is lifted and you need to work on the load, always release the pressure from the jack and lower to load onto wooden supports.</p> <ul style="list-style-type: none"> <li>- Never put arms, legs, head etc. under lifted loads (A),</li> <li>- wear protective footwear (B),</li> <li>- wear a helmet if necessary (C),</li> <li>- wear safety glasses if needed (D),</li> <li>- wear gloves if necessary (E),</li> <li>- wear a hair net if you have long hair and fix loose cloth (i.e. ties)</li> </ul> <p>! Comply with all other safety warnings and other safety signs in the working area.</p>
		
		

Before you start working you should fully understand that lifting and shifting heavy loads brings different risks and is dangerous. Therefore please follow this manual, ensuring that everyone who is using this equipment has fully read and understood this manual and the safety warnings. Nobody should use this equipment without reading this manual.

Think about what you want to do and how you want to do the job prior to starting - so that everybody involved knows what is going on.

Do not operate this equipment if you are ill, feeling sick or tired, or under the influence of alcohol or drugs. When you work under such condition you might harm yourself and others. or even cause life threatening injuries.

An annual safety inspection of the jack should be carried out.

EC-Declaration of Conformity  
in accordance with Machinery Directiv 2006/42/EEC Appendix II A  
of the European Parlament and Council



We hereby declare, that the furniture mover HTS ECO-Jack® DUAL HT

Type: HT600, HT1800  
EJ#: starting at 280650

to lift and move loads complies to the following EC-Machine Directive:

EC-Machinery directive  
transposed harmonised standards, in particular:

2006/42/EG  
EN1494  
EN349  
EN12100  
DIN EN ISO 9001

Quality management system

The validity of this declaration will cease in the case of unauthorised modification without prior written agreement from the manufacturer. Furthermore, validity of this declaration will cease in case of the equipment not being correctly used and maintained in accordance with the supplied user manual.

HTS GmbH  
Ringstrasse 28  
70736 Fellbach  
Germany

Tel. 0711-3426679-0  
Fax. 0711-3426679-99  
www.hts-direkt.de

January 2012

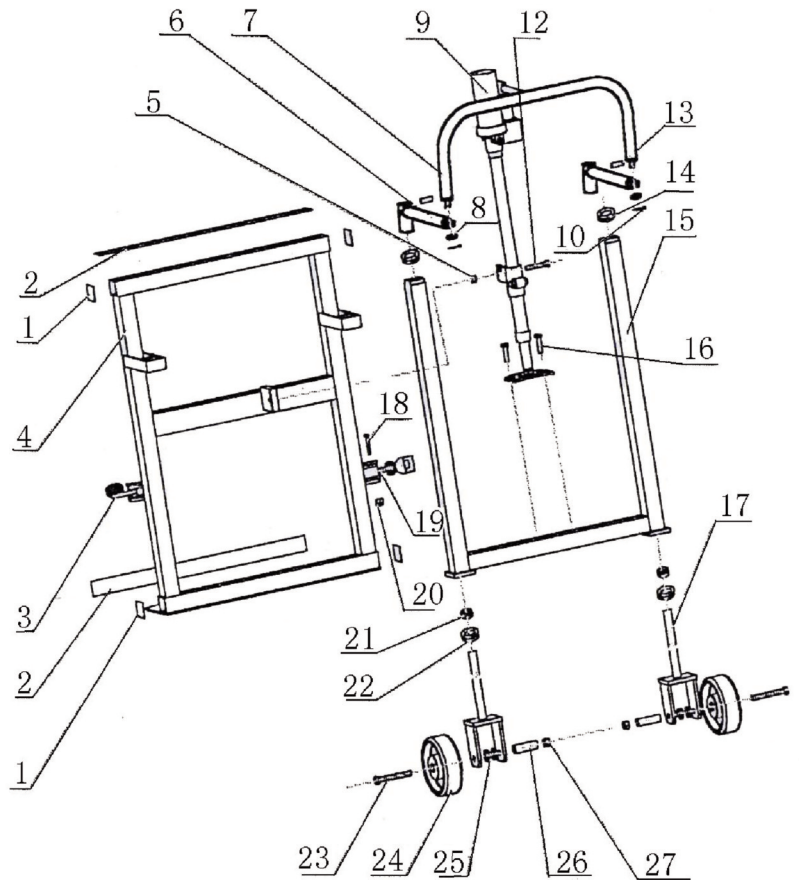


Michael Koch

Please supply with your order the correct part number, quantity required and description as well as the type of the jack and serial number. If a repair has to be carried out by HTS please send only the defective parts - Thank you.

### Spare parts HT1800

Pos.	Description	Qty.
1	Dust-proof Cover	4
2	Cushion	2
3	Woven Stripe	1
4	Lifting Frame	1
5	Split Ring 8	1
6	Handle Assy.	2
7	Hand Tube	1
8	Washer	2
9	Hydraulic Jack	1
10	Pin	2
12	Fixing Pin	1
13	Cylindrical Spring Pin	2
14	Nylon Washer	2
15	Supporting Frame	1
16	Bolt M6x20	2
17	Supporting Rod	2
18	Bolt M10x70	2
19	Cargo Lashings	1
20	Nut M10	2
21	Thrust Bearing 51204	2
22	Dust-proof Ring	2
23	Bolt M12x90	2
24	Wheel	2
25	Liner Bushing	4
26	Axle Sleeve	2
27	Nut M12	2



### Spare parts HT600

Pos.	Description	Qty.
1	Screw	1
2	Hand grip	1
3	Crank	1
4	Seating	1
5	Drive gear	1
6	Driven gear	1
7	Plane gear	1
8	Screw rod	1
9	Wheel seating	2
10	Inner housing 1	2
11	Inner housing 2	2
12	Ratched strap	1
13	Lifting platform	1
14	Wheel	1
15	Washer	2
16	Frame	1
17	Felt	2
18	Supporting plate	1
19	Nut	1
20	Dust-proof cover	1

